

# Introducing the Library's Institutional Repository Project - why, what, who and when

By Phil Butler

# Act I



This afternoon I'd like to tell you a bit about the Library's Institutional Repository Project: Why, What, When and Who?

I'd like to start with a newspaper headline. "Revealed: University's research is second division". I think its fair to say that a headline like this would cause some significant concern for any major research-led university.

Certainly it would be difficult to believe if this applied to Manchester. Well unfortunately, that facts aren't far away from this fiction.

# THES Nov 07 – Worlds top 200 universities for 2007

- 30<sup>th</sup> overall

# THES Nov 07 – Worlds top 200 universities for 2007

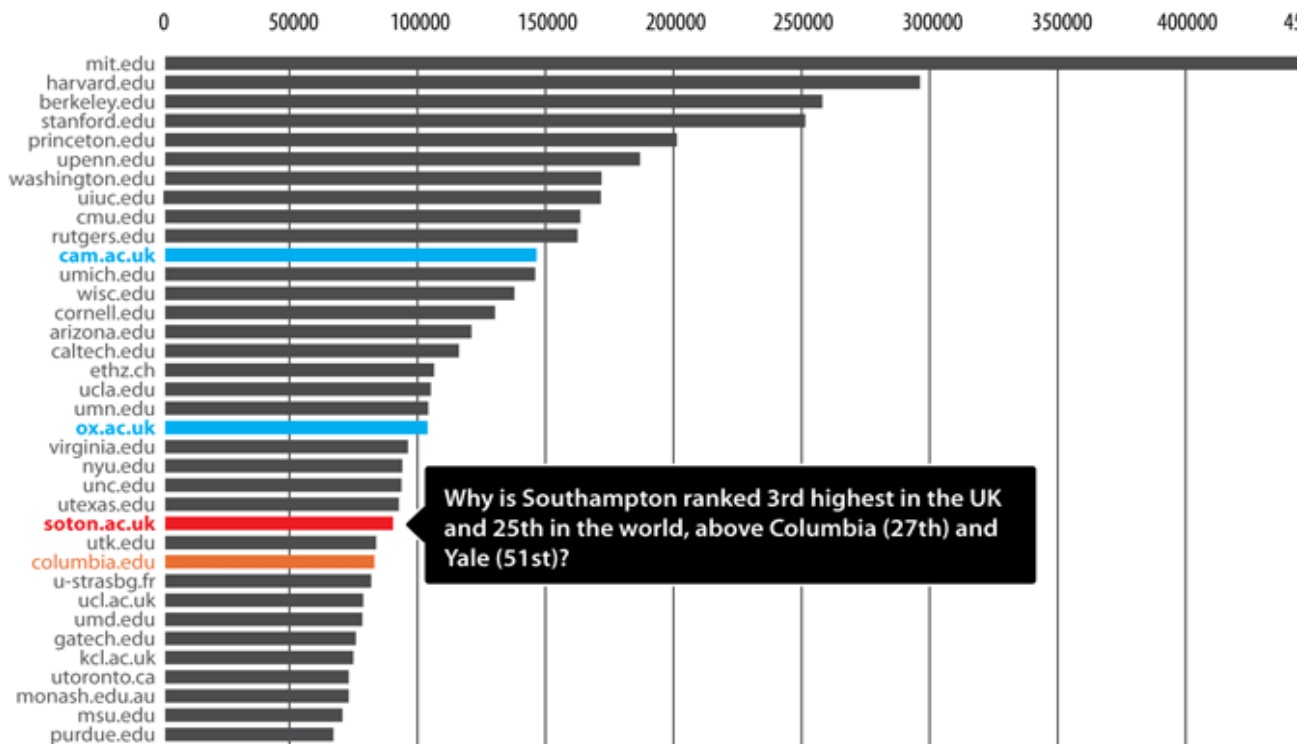
- 30<sup>th</sup> overall
- 133<sup>rd</sup> for research impact (citations/staff)

# EducationGuardian Oct 07 – research metrics for 137 UK universities

- 8<sup>th</sup> overall

## EducationGuardian Oct 07 – research metrics for 137 UK universities

- 8<sup>th</sup> overall
- 32<sup>rd</sup> for research impact (citations relative to world average)



## No institutional repository threatens Manchester's 2015 vision

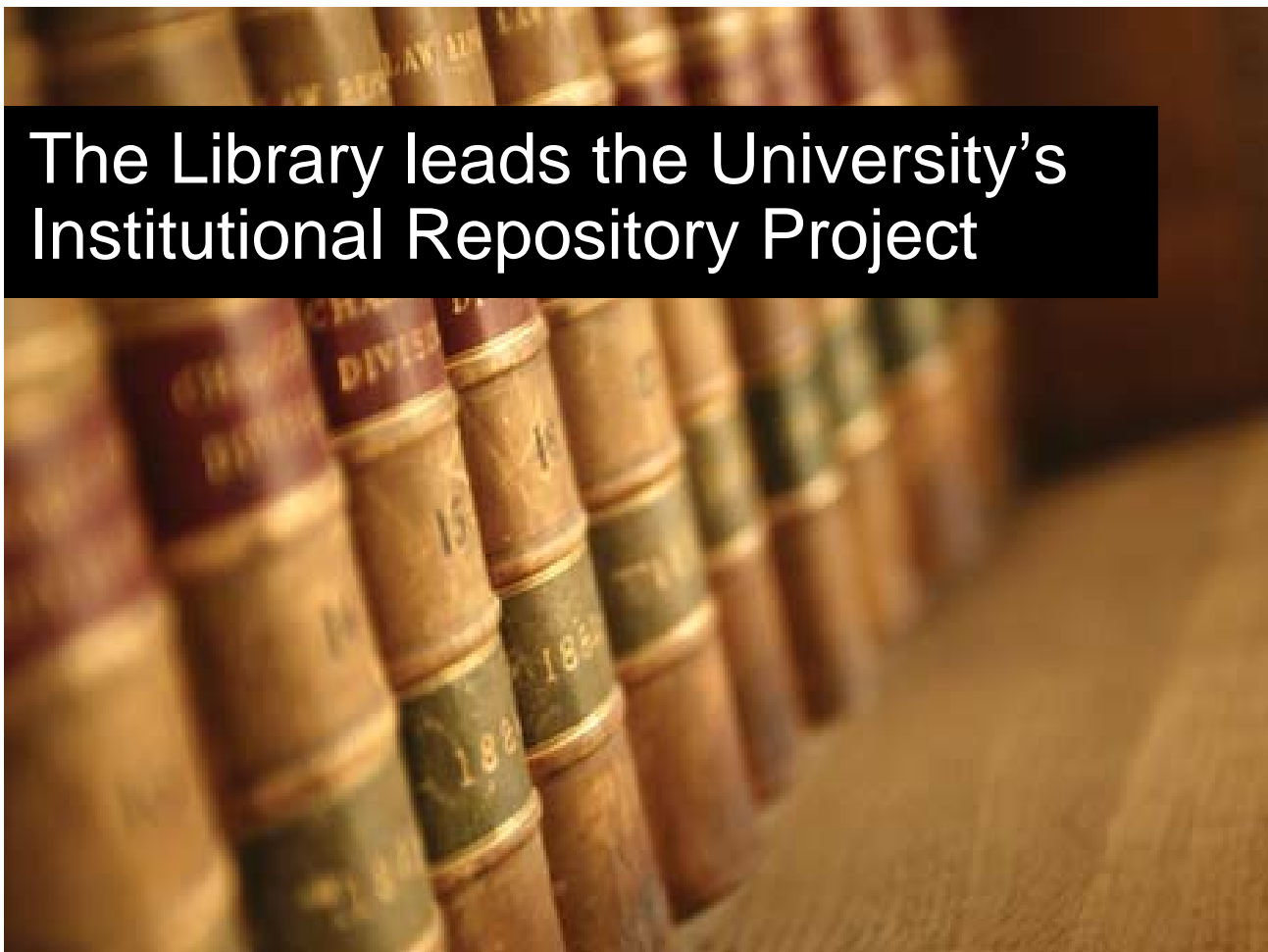
Southampton's performance put down to

- RAE 2001 results, ranked overall 10<sup>th</sup>, VUM ranked 8<sup>th</sup>, UMIST ranked 25
- Maximising access to research maximises research usage and impact
- U. Southampton's Electronics and Computer Science (ECS) Department's involvement in many high-profile web projects and activities Prof Tim Berners-Lee attributed with inventing world wide web
- Since 2001 Southampton has been leading the way with the development of repository systems and open access debate, and was the first university to establish an institution-wide policy encouraging staff to deposit their scholarly work and make it open access as soon as possible



**Institutional repositories improve  
the visibility and impact of research**





# The Library leads the University's Institutional Repository Project



As a consequence, the Institutional Repository Project needs your skills, expertise, knowledge and cooperation.

# Act II, Scene 1



## Institutional Repository Services will benefit our customers

Repository services can benefit your costumers, whether they be academic staff, postdoctoral researchers or postgraduate students.



# 1. Technologies

The project will establish a set of technologies.



# 1. Technologies deposit

These will allow the easy submission of content from alternative locations according to an individual's preferred way of working.

This could be some plug-in software that integrates with their web browser and gives the individual instant access to the repository directly from their computer's desktop. Additionally, an individual may prefer to work in a well-developed Faculty Intranet. In this case we would work with the Faculty to embed the repository's management interfaces inside that Intranet. An individual might prefer to work across organisational barriers, and as such, they may choose to manage their scholarly work via a central point such as the Library website or University portal.



# 1. Technologies

deposit  
store, preserve, archive

Technologies will enable the storage, preservation and archiving of content.

The project will focus on the storage and management of

- Academic publications, including journal articles, books and book sections
- Theses and masters dissertations
- Grey literature including, conference and workshop materials, patents, technical reports, working papers
- Audio visual items, such as performances, shows, exhibitions, compositions and artefacts

Although we plan for the Project to consider a broad set of materials, due to practicalities and priorities we've excluded, for the time being,

- Teaching and learning materials and
- Experimental data





# 1. Technologies

deposit  
store, preserve, archive  
disseminate

They will enable work to be easily disseminated and accessed by internal and external audiences. For example a member of university staff may wish to display their scholarly work on a personal website, a Faculty or School website and the Universities main corporate website.

As well as sharing information automatically with internal university systems, we expect the repository to make content visible to external subject specific repositories such as PubMedCentral, and ArXiv, and search engines such as Google Scholar, Intute and OAISter.



## 2. Awareness

Stakeholder engagement and awareness is critical Project deliverable.



## 2. Awareness

### research council mandates

We need to make researchers aware of research council mandates.

6 of the 7 major UK research councils have now mandated that research outputs from grants that they fund should now be made freely and easily accessible via depositing in a repository.



## 2. Awareness

research council mandates  
copyright

We need to make individuals aware of the rights with respect to copyright.

Copyright is an often confused subject. Academic researchers invariably think that they are unable to disseminate their research due to the fact that they sign-over the copyright of the final published article to the publisher.

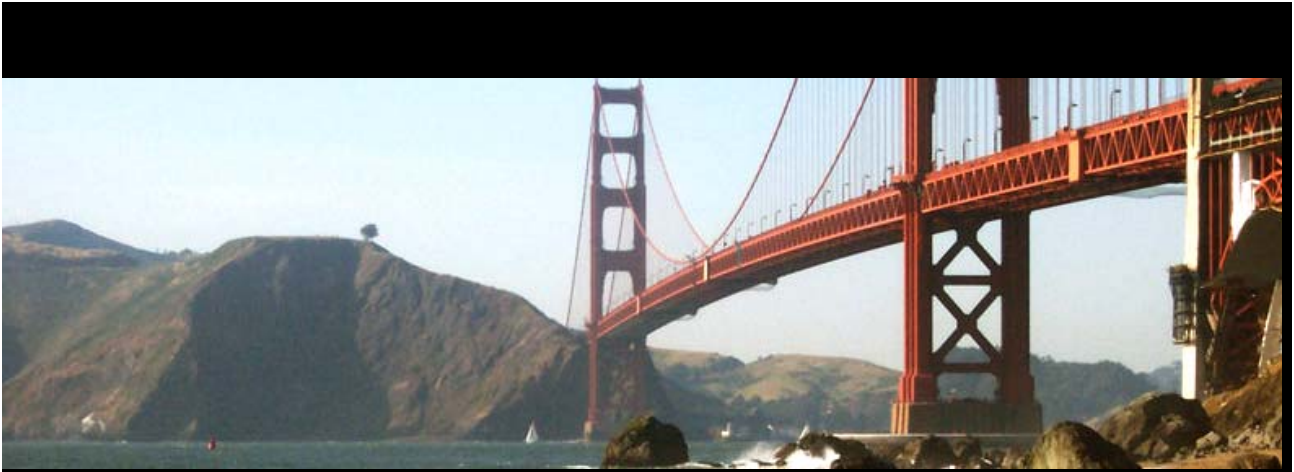
In reality over 70% of publishers now allow journal articles to be made freely available. Where publishers constraints still exist, authors often still retain the copyright of the preprint/draft materials and as a result these can be deposited in an institutional repository and made freely available.



## 2. Awareness

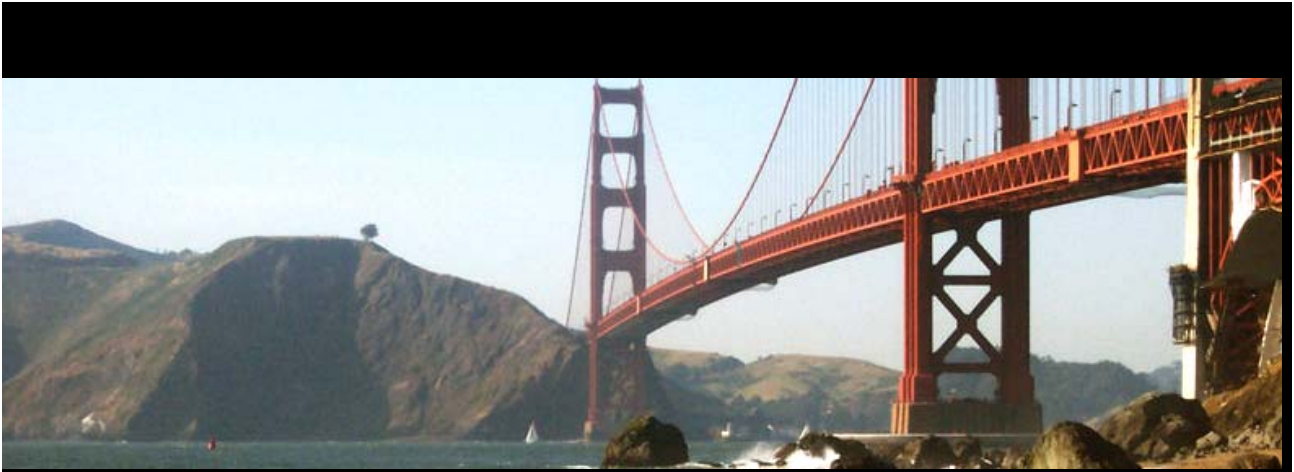
research council mandates  
copyright  
open access

Finally, we need to educate individuals on the benefits of Open Access and how this can impact their research careers.



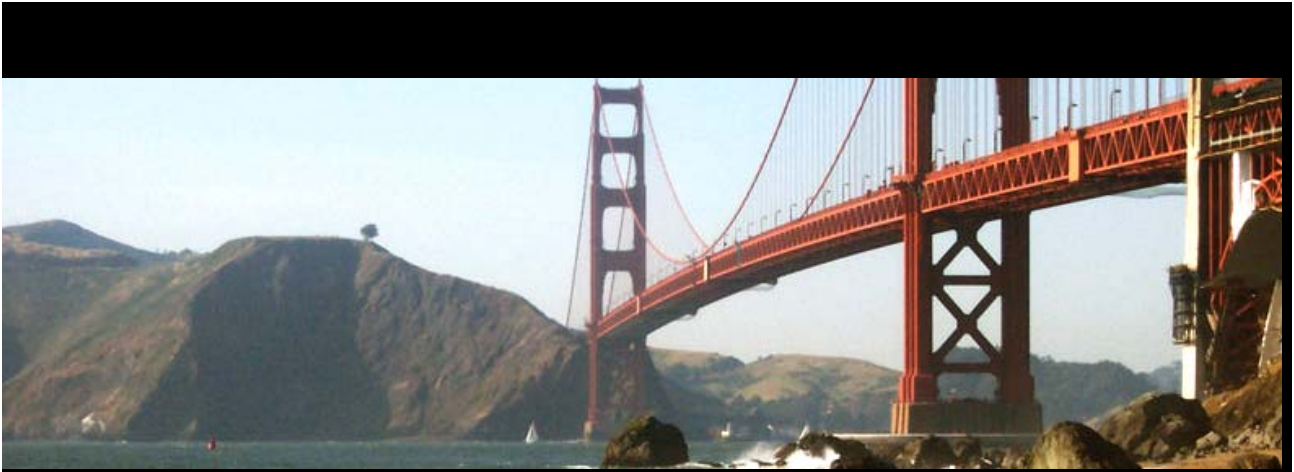
## 3. Support

A third key project deliverable is 'support'.



### 3. Support governance

The project will establish a governance framework including policies and best working practices for using the repository.

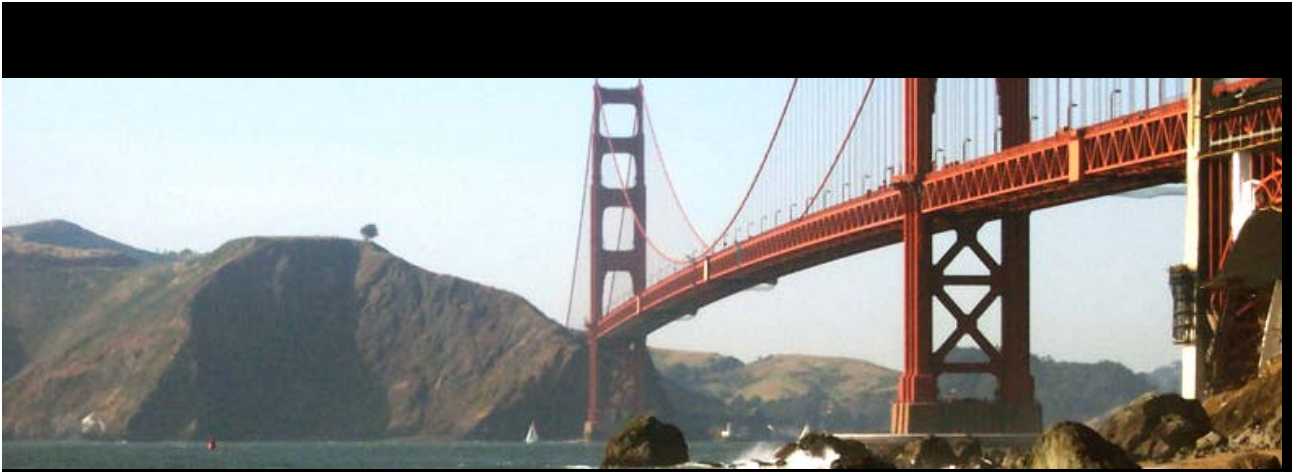


### 3. Support governance network

It will develop a support network of individuals that deposit and manage content on behalf of the University's academic community.

This might include research business managers or other research support staff based in faculties or schools. Equally it might involve individuals based in central university functions such as the Research office or Library, and/or a dedicated repository support team.



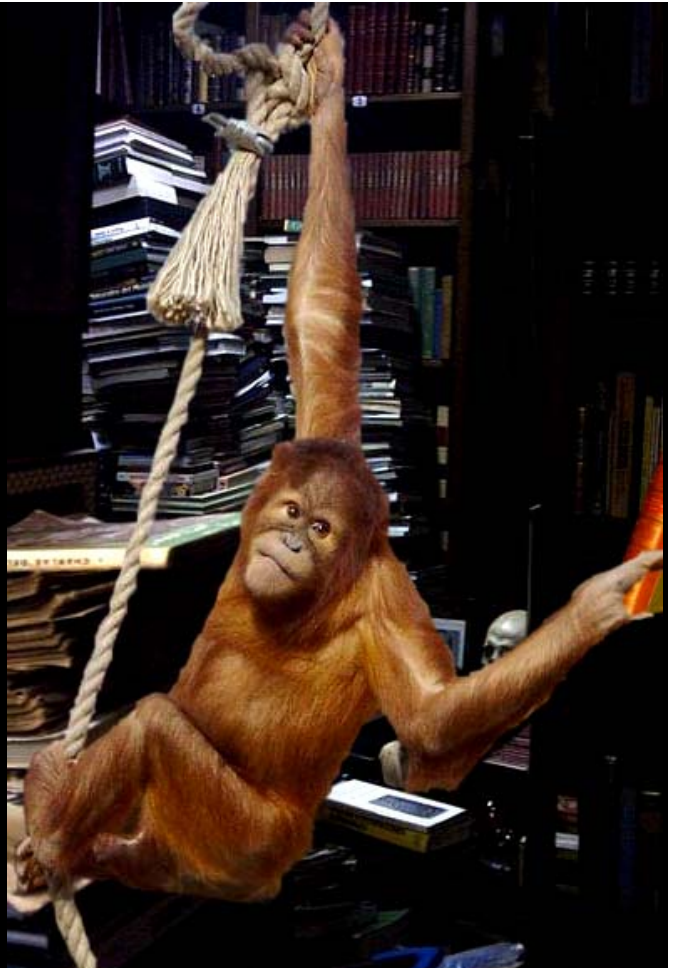


### 3. Support governance network sustainability

Finally its important to note that this project represents a long-term commitment by the University, hence we need to plan for sustainability such that the repository continues way past the end of the Project.

# Act II, Scene 2

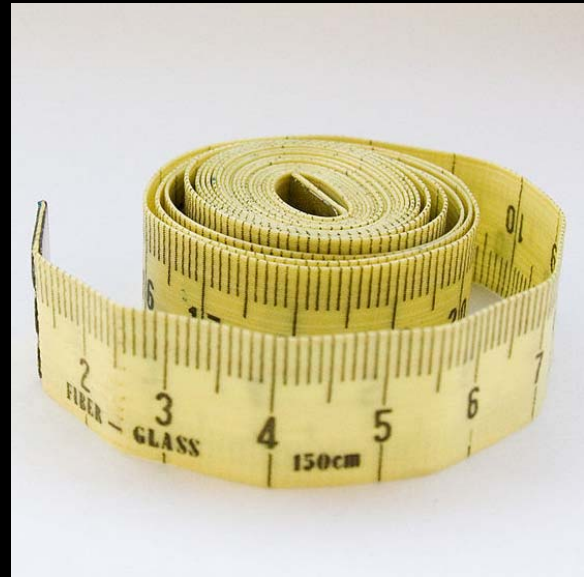
Repository  
Services can  
benefit  
librarians



Repository  
Services can  
alert



## Repository Services can measure



They can be used to measure the impact of a piece of work. For example it will be possible to determine how many times a piece of work has been downloaded and from where in the world those downloads have originated.

# Repository Services can inform



Repository service can be used to inform on the status of your subject area

# Act II, Scene 3

# How can you make a contribution



Visit the project website

Read literature

Discuss and debate open access and repository



# What are other librarians doing?

[Play the tape](#)

<http://code4lib.org/2007/larson>

What are other librarians doing? Well I'm not a librarian so I find it difficult to say what I think you should be doing, but I've found a presentation by an enthusiastic American librarian I thought it would be worth showing you what is possible. Play the tape ... <http://code4lib.org/2007/larson>.

# How to make a contribution

- learn
- communicate
- join in



Visit the project website

Read literature

Discuss and debate open access and repository

# How to make a contribution

- learn
- communicate
- join in



Listen to what staff and students want  
Ask questions and tell people what you know  
Tell the project your findings

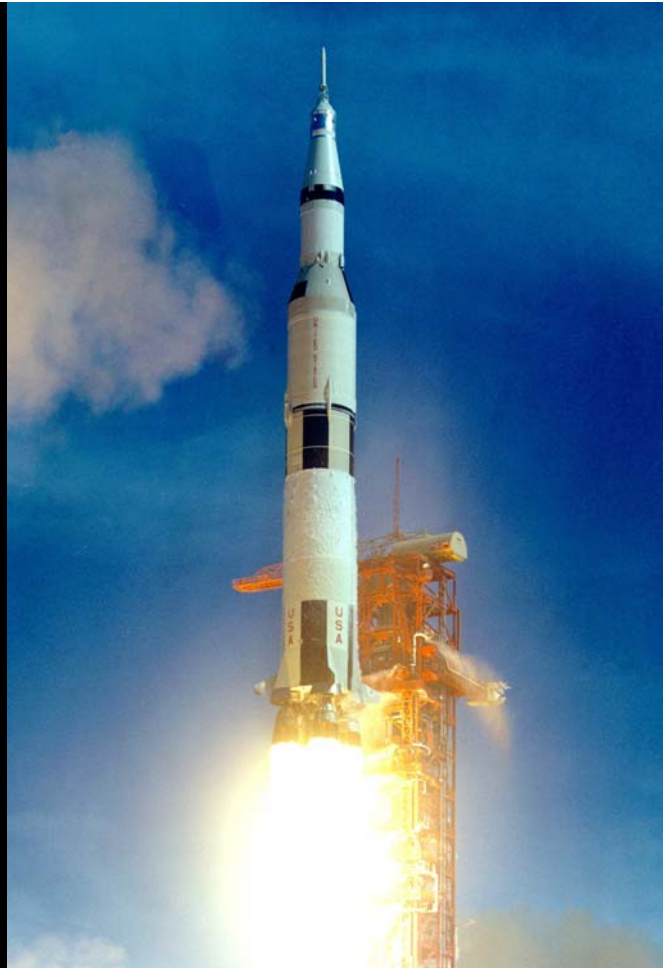
# How to make a contribution

- learn
- communicate
- join in



become an early adopter,  
provide ideas for demonstrators  
a member of the project's user focus group  
ultimate join repository support network

Will the  
Institutional  
Repository  
Project improve  
the University's  
research  
impact?



Will the Institutional Repository Project improve the University's research impact?  
Well I guess time will tell.

What I can say for sure the clock is running and we've left the launch pad.

# Act III





Furthermore if this Project's going to be a succes with need your help and expertise.

Add a new  
feather to  
the Library's  
hat



And by working together I believe we can add a new feather to the Library's hat.





Such that instead of a troublesome headline we might one day be able to say with confidence, Manchester is without a doubt a premier league university.

And I will stop them. Thanks for your attention and time.

# Questions

**Phil Butler**

Email: [p.butler@manchester.ac.uk](mailto:p.butler@manchester.ac.uk)

Tel: x51514

[www.manchester.ac.uk/institutionalrepositoryproject](http://www.manchester.ac.uk/institutionalrepositoryproject)